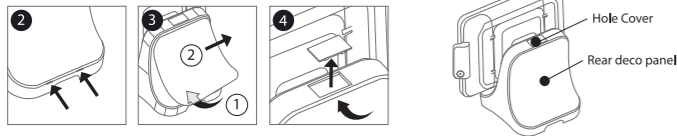


Installing Optional Items

Installing / Removing Hole Cover

Remove the Hole Cover to install Customer display(VFD) or 2nd display

- 1 Power off the product
- 2 Remove the cover in use of the groove shown in the picture ②
- 3 Separate the rear deco panel from the body as shown on figures ① and ②
- 4 Press the bottom part of the open Hole Cover to separate



VFD/2nd Display

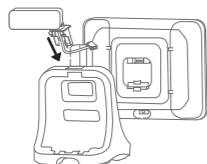
1 Connecting VFD/2nd Display's hinge

VFD: Join the VFD to the hinge in same shape. Move it to the direction as below arrows.

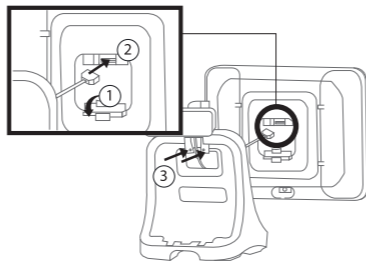


- 2 Join the VFD/2nd Display hinge to the separated hole cover as the arrow.

2nd Display : Turn open knob hinge, connect the cable and join the dual hinge.

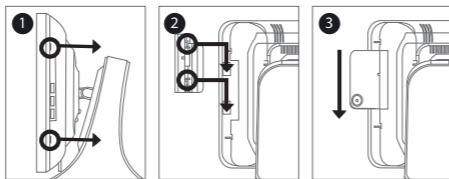


- 3 Turn the open knob hinge to separate the body. Connect the cable to 1, 2 rear ports. Put it back and fix with the screws.



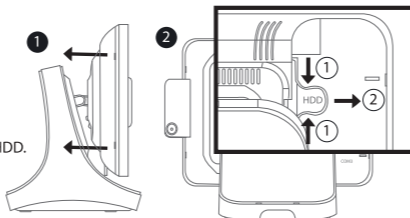
MSR

- 1 Open the right side cover to install the MSR as shown in figure 1
- 2 Insert the MSR (Hook side in) to the base of the monitor
- 3 Slide the MSR down to secure the position
- 4 Connect No.17 cable with I/O port in the right.



HDD Replacement

- 1 Open left cover to replace HDD
- 2 Press the HDD lock to release the HDD. Slide the HDD out shown in figure ②



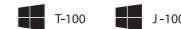
Product Specifications

Model	P2C T-100	P2C J-100
System Configurations		
Processor	Intel Celeron™ 1.8GHZ 1037U	Intel® Celeron® J1900(2.0GHz) Quad Core Processor(2M L2 Cache)
Chipset	Intel NM70 Express Chipset	F81960DI
1st Storage	2.5" SATA- II SSD 64GB (default) or HDD 320GB (optional)	2.5" SATA-III SSD64GB(Default), Support Advanced Host Controller Interface.
Memory	Single-Channel DDR3 Connector for 1066/800MHz x 1, default 2GB up to 8GB	Single-Channel DDR3 Connector for 1333MHz, default 2GB up to 8GB
Graphics	Intel HD Graphics (350MHz-1GHz)	Integrated Intel® HD Graphics (688MHz-854MHz)
BIOS	AMI BIOS	
OS	POSReady2009, POSReady 7, Win Emb Industry Pro 8.1/Windows 8.1/ Pro Retail, Windows R 10 IoT Enterprise	Windows 7, 8, 8.1, 10(X64)
2nd Storage	Supported (Not Supported for RAID)	
Display		
Main Display	15" with WLED Backlight (1024 x 768), Single LVDS 24bits / Supports Tilt (0° ~ 53°) Viewing Angle and Brightness above -80~80°(H), -70~70°, 250cd/m2	
Touch	5-Wired Resistive Flat or Normal Touch	
I/O Interfaces		
LAN	1 x 10/100/1000Mbps Base T Ethernet	
Serial Ports	2 x DB9(Powered on pin 9)-Power Selectable by BIOS(+5V, +12V), 1 x DB9(Can be used for DVR, optional) 1 x RJ50 (Powered on pin 10)-Dedicated +5V	
USB	6 x USB 2.0 type A ports, 1 x mini USB type AB port	
Special USB	1 x miniUSB type AB port for Card Reader.(Selectable Interface Type-Auto/USB/RS232_TTL by BIOS)	
Display Port	D-SUB 15 pins Analog VGA	
Expansion Slot	miniPCI-e	
Cash Drawer	1 x RJ11 type (Support Epson & Star Cash Drawer)	
Audio Ports /Speaker Out	1 X Mic-in, 1 X Audio-out / built-in 1watt Stereo Speaker	
Options		
2nd Display	10" or 15 with WLED back light (1024 x 768), Single LVDS 24bit or 18bit Support 5-wired resistive touch panel (optional) / Support tilt (-45°~75°) and swivel : 25° Viewing Angle and Brightness above -80~80°(H), -70~70°, 250cd/m2	
VFD(CDP)	2 lines x 20 characters, Alphabet & Numeric, Supports 15° ~ 90° Tilt and 25° Swivel	
MSR (Magnetic Stripe Reader)	ISO7811, All Track (Supported USBHID &Serial/COM6 Interface) 5 to 150 cm/s	
SCRI(Smart Card Reader)	ISO7816 EMV level 1	
Dallas Reader (i-Button)	Dallas Reader (Supported i-Button)	
Physical Dimension		
Dimension	354 x 246 x 339 (W x D x H, mm)	
Weight	5.5 (kg)	
Environment		
Power Supply	DC12V-5A Adaptor, 96WAC~250VAC, 47Hz ~ 66Hz 60watt.	
Temperature/Humidity	Operating: 0 ~ 25 °C at 10% to 90% humidity / 10~80% Humidity	
Certifications	CE, FCC, CB, KC	

⚠ This manual is provided for informational purposes only, under copyright laws, reproduction, distribution is prohibited. The contents of this manual are subject to change without prior notice.

Installation Guide

POS 100 Series



Safety Instructions

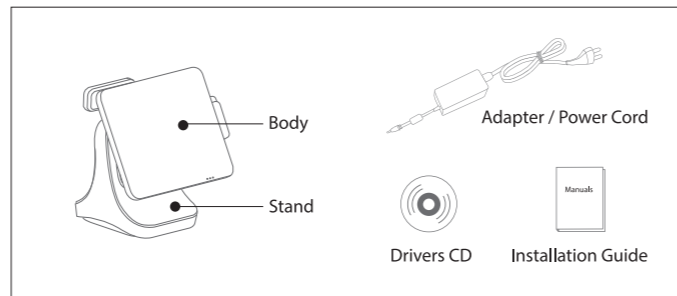
Read all safety precautions before using the POS system.

- 1 Before connecting, make sure the operating voltage is AC100 ~ 240V. Otherwise, you may damage the system.
- 2 Do not install the system in an extremely hot or cold place.
- 3 Avoid exposing the product in direct sunlight or in an enclosed space for a long period of time.
- 4 Be careful not to place the system near other high-frequency electromagnetic devices; there is a strong possibility it will lead to a system malfunction or system error.
- 5 Do not place heavy objects on the system.
- 6 Prevent external substances from entering the system.
- 7 Do not change the motherboard's battery by yourself. It can damage the system.
- 8 Before disassembling the system, disconnect all power and cables.
- 9 Do not remove or repair the system by yourself. We highly recommend an engineer's assistance or an experienced technician to open the system, especially the LCD and touch panels which could be easily broken.
- 10 An electrical outlet is needed near the device and it should be easily accessible.
- 11 There is risk of an explosion, if the battery is replaced incorrectly. Dispose the used batteries according to the manufacturer's instructions.
- 12 This device complies with the EMC (Electromagnetic Compatibility) Regulations, for business purposes. Distributors and users are advised of this matter. Please exchange the equipment if you mistakenly sold or purchased this product.

POS terminal security guideline

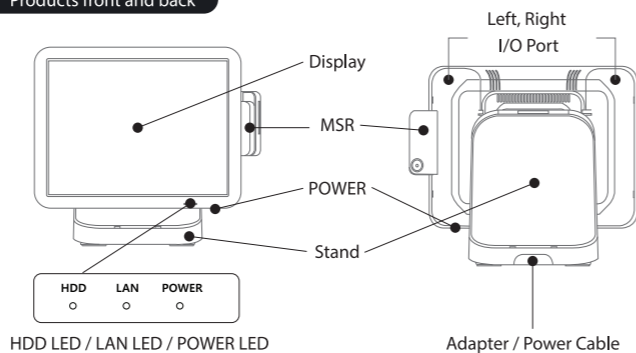
- ⚠ Operating System Security
 - When using an universal OS system with this system,
 - System-provided and managed by the operating system's default security settings must be configured.
 - When using a wireless network and internet
 - Proven safety standard encryption algorithms to be used and the standard authentication protocols.
- ⚠ User Security
 - Tapping and Skipping of the system is the operator responsibility
 - The system operates in general purpose operating system, the following conditions must be included.
 - Firewall must be set
 - Periodically the OS security patches should be applied
 - A well secured program is needed when working remotely

Product Composition

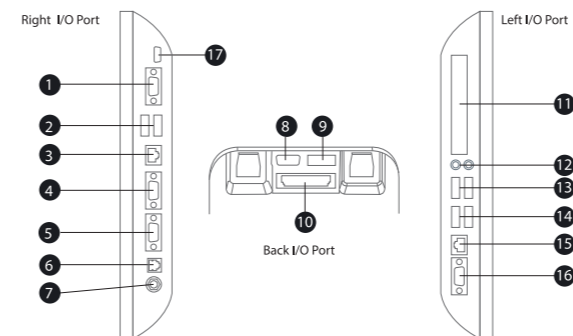
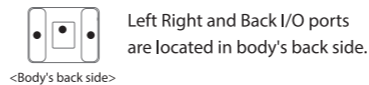


Product Appearance

Products front and back



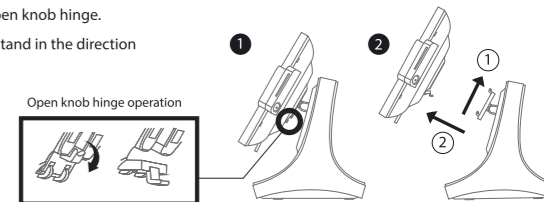
I/O Port



Description		
1 VGA	7 POWER (DC +12V)	13 USB1,2
2 USB5,6	8 Rear USB7 (pin header type)	14 USB3,4
3 LAN	9 POWER + SATA	15 COM3
4 COM1	10 Dual Monitor or CDP (Serial COM4)	16 COM5/DVR(optional)
5 COM2	11 HDD Slot	17 COM6 for MSR/ICR
6 CASH DRAWER	12 MIC, SPEAKER	

Body and Stand Installation

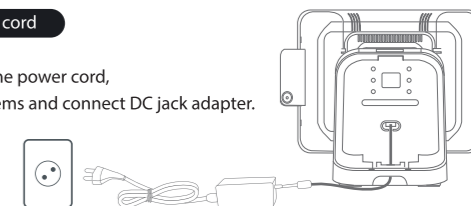
- 1 Rotate the open knob hinge.
- 2 Remove the stand in the direction of the arrow.



Turning the power on

Connect the power cord

Before connecting the power cord, install all optional items and connect DC jack adapter.



Power On

Please turn the power on after installing all optional items.
 ※ Connect adapter and body first before connecting power cord to a 220V (110V) outlet. Power supply is located on the lower right side of the monitor. When power is connected, the LED will light up. Each LED lamp will indicate the operation status.

- 1 HDD LED : Operation mode (RED)
- 2 LAN LED : LAN Connection (ORANGE)
- 3 POWER LED : Power Connection (BLUE)

